

FOUR SEASONS PRIVATE RESIDENCES

8. JUNE 2021
BZA APPLICATION
NO.20443

Adjaye Associates



FSPR: SITE PHOTOS



1. 29th Street



2. 29th Street (West Entrance)



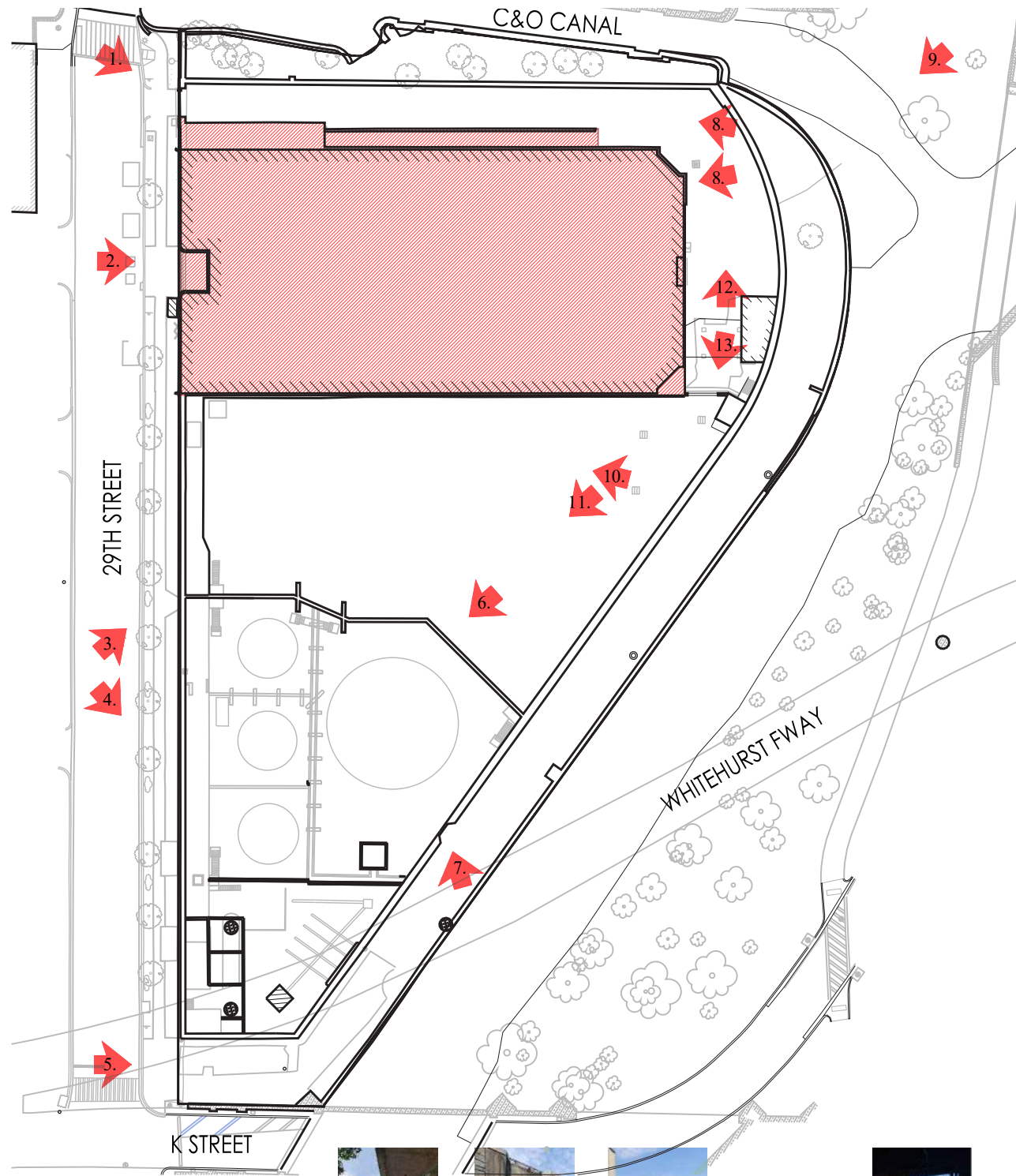
3. 29th Street (West Wall) - Looking North



4. 29th Street (West Wall) - Looking South



5. West Wall - South



8. Tower East Wall



9. View from Highway (NE)



10. Tower East Wall



11. Exist. South Wall



6. Aerial View



7. Flood Wall

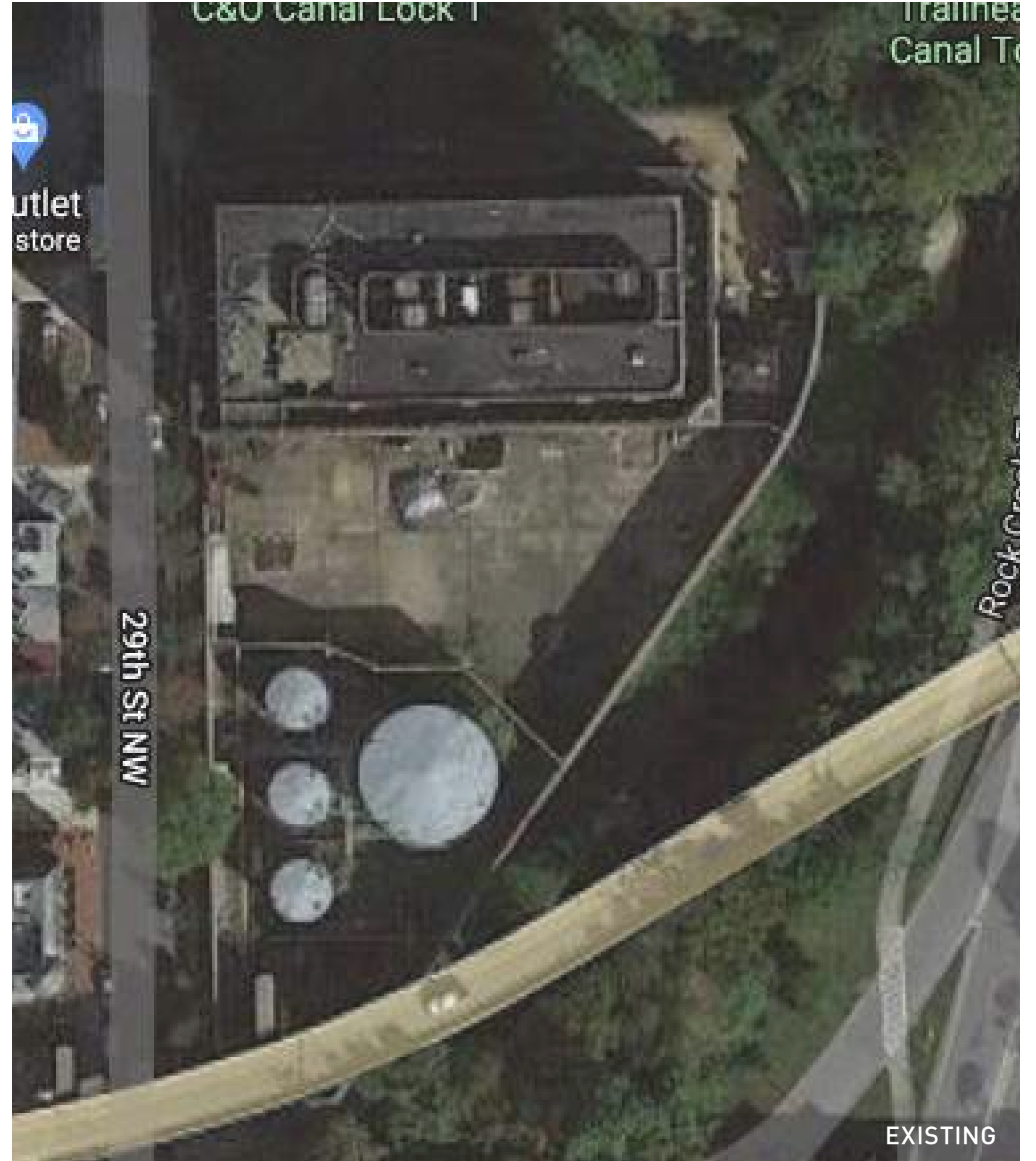
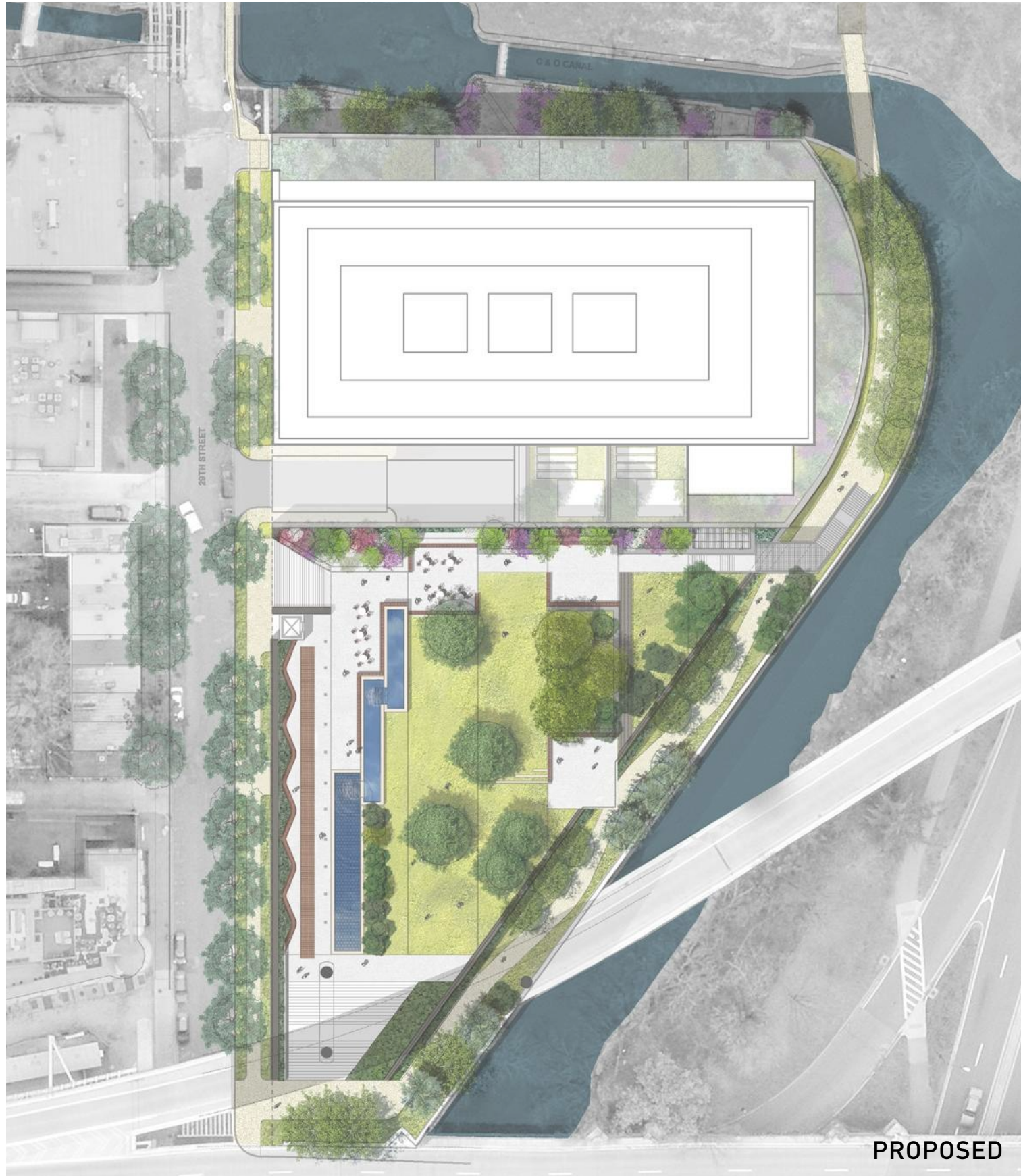


12. East Courtyard - Looking North



13. East Courtyard - Looking South

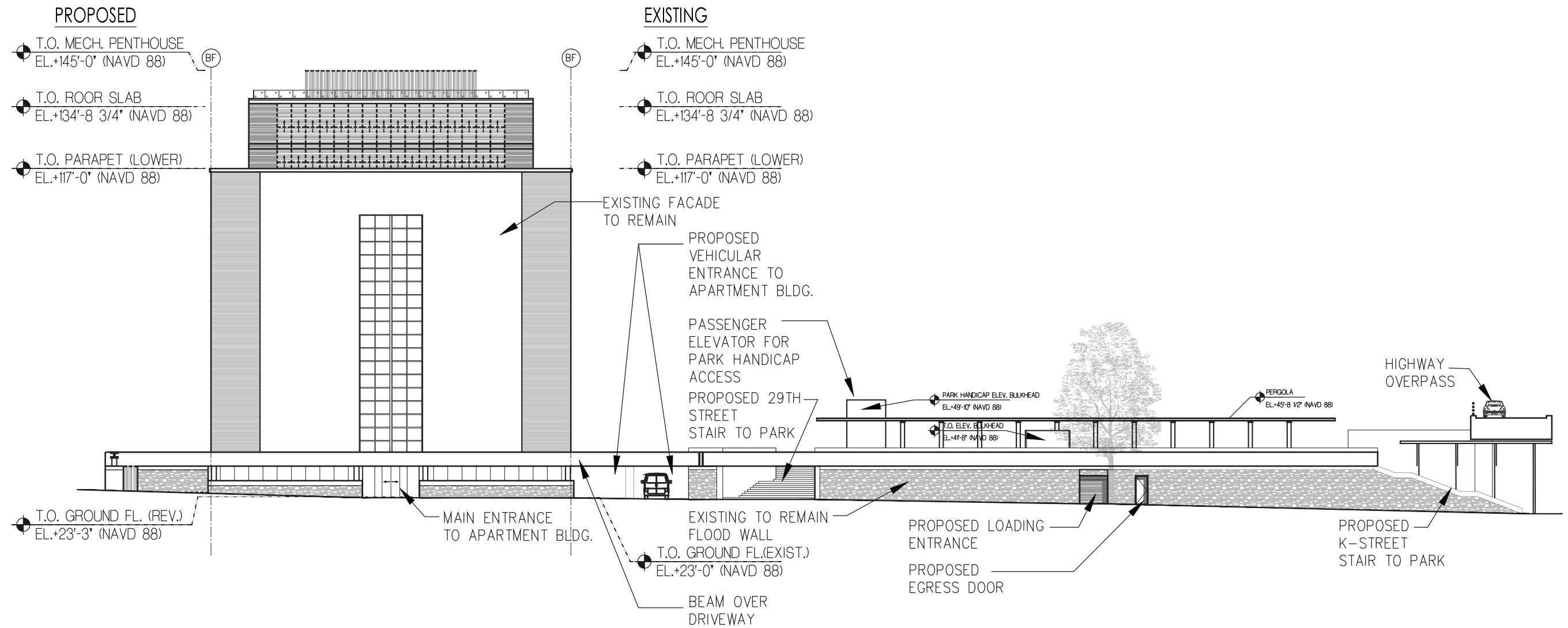
FSPR: SITE CONTEXT



FSPR: PARK PERSPECTIVE - SOUTH



FSPR: WEST SITE ELEVATION



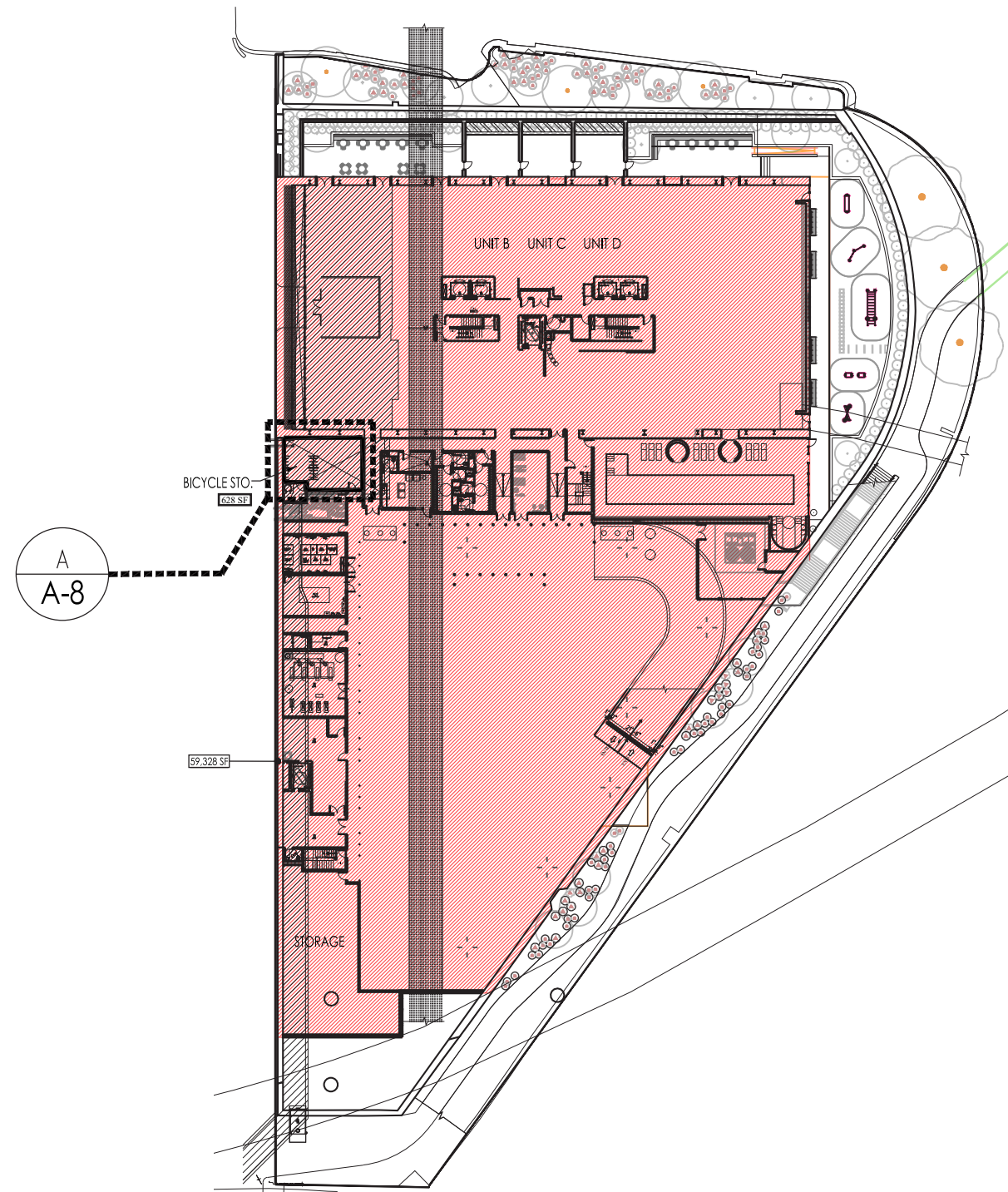
FSPR: SITE PLAN PROPOSED/LOT OCCUPANCY



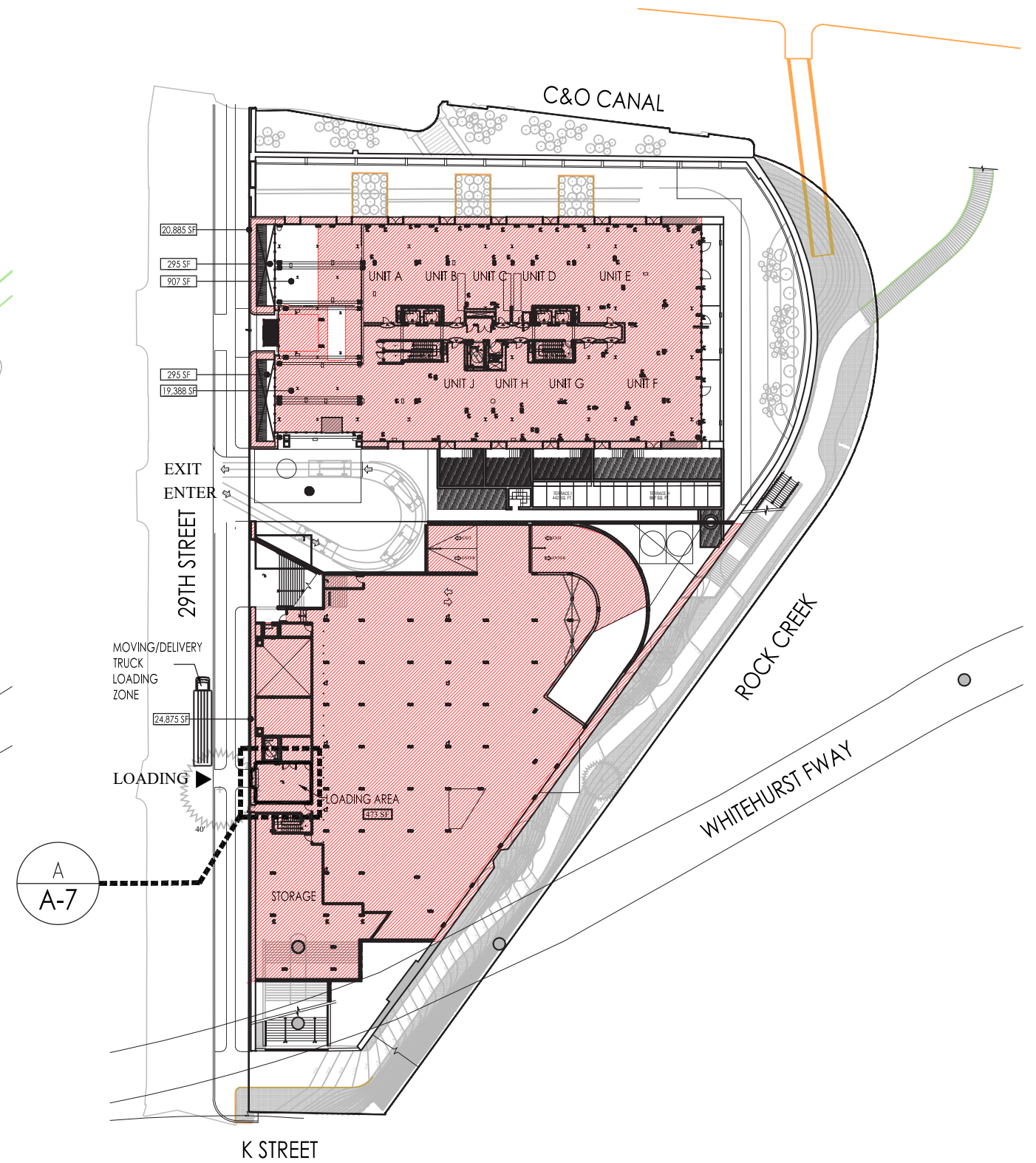
LOT OCCUPANCY = 61%
SITE AREA = 87,120 SF
BLDG FOOTPRINT = 53,618



FSPR: GROSS AREA CALCULATION



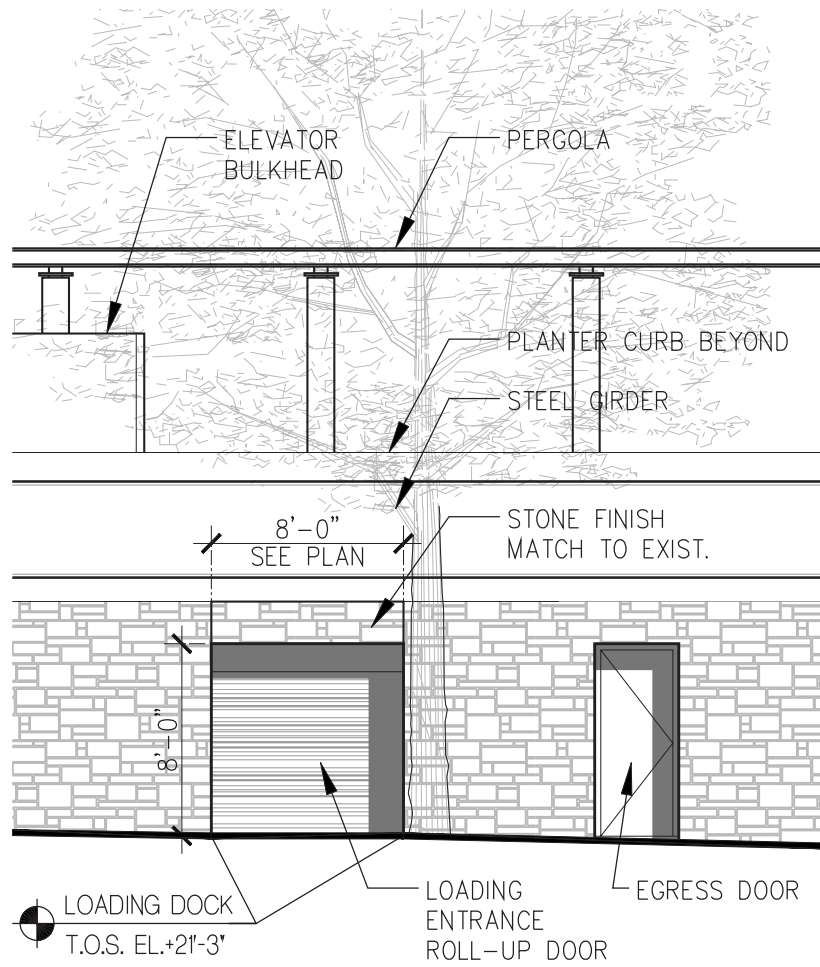
CELLAR PLAN
GROSS AREA: 59,328 SF



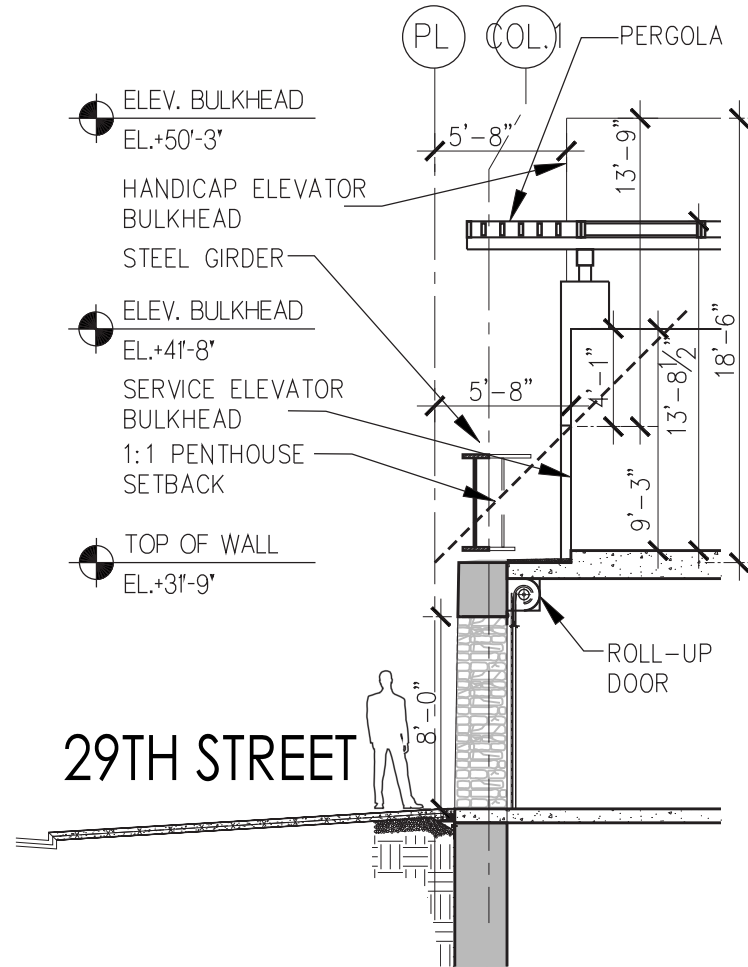
GROUND FLOOR PLAN
GROSS AREA: 41,493 SF



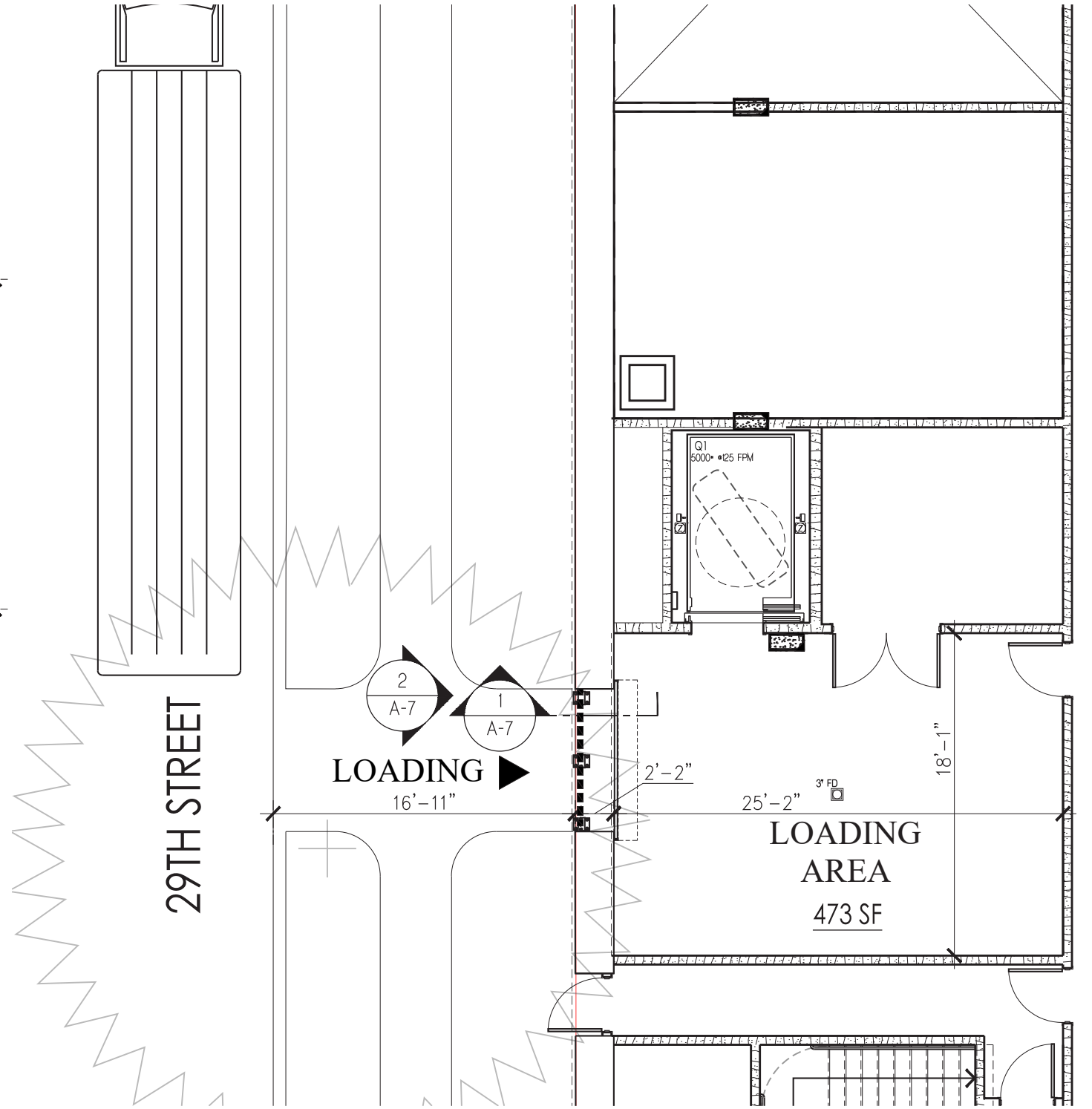
FSPR: LOADING DOCK DETAILS



2 PART ELEVATION
SCALE: 1/8" = 1'-0"



1 PART SECTION
SCALE: 1/8" = 1'-0"



A PART 1ST FLOOR PLAN
SCALE: 1/8" = 1'-0"

FSPR: PARK - HANDICAP ELEVATOR OVERRUN

